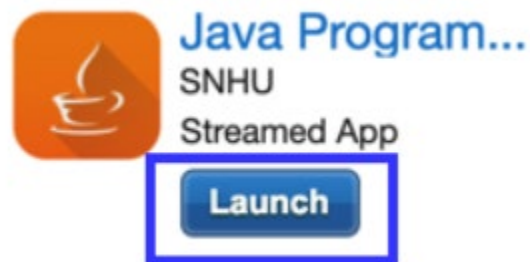




Uploading Files to Eclipse

This tutorial will guide you through the process of uploading a project into Eclipse via the Virtual Lab (Apporto).

1. Open the Virtual Lab (Apporto) by using the link in the Virtual Lab Access module. You may be prompted to log in with your SNHU credentials. Once inside Apporto, select the **Launch** button for the Java Programming app. The virtual environment can take a couple of minutes to load.



Note: It is recommended that you use the Chrome web browser when accessing Apporto.

2. Once Apporto opens, be sure your browser window is in full-screen mode. Select the **upload icon** on the Apporto tool bar.

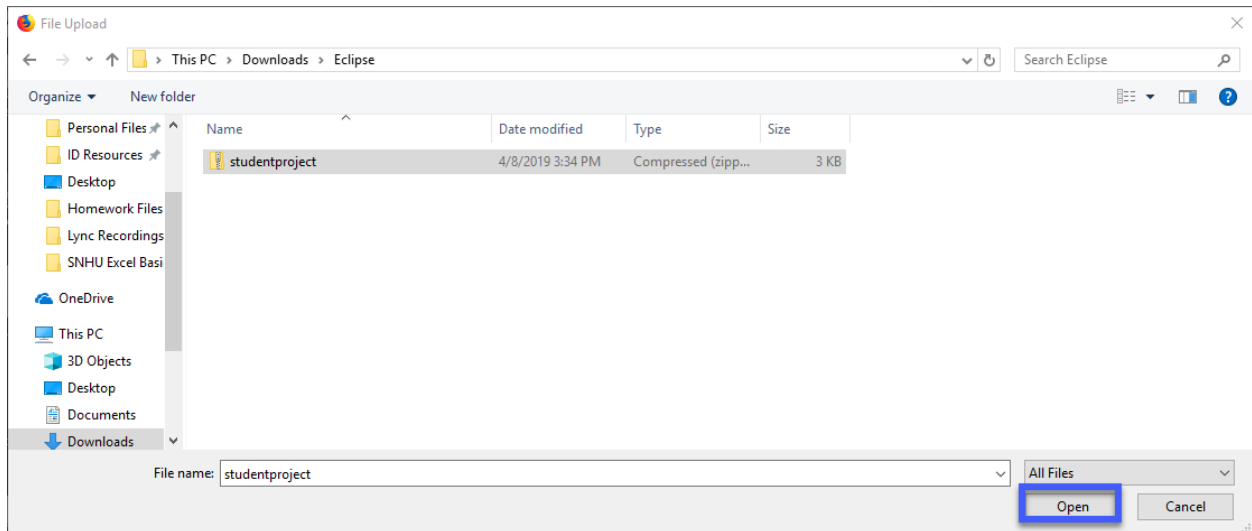


3. In the **File upload** window, select a destination folder for the files. In this example, we are saving to the Apporto desktop. Next, click the **Upload** button.

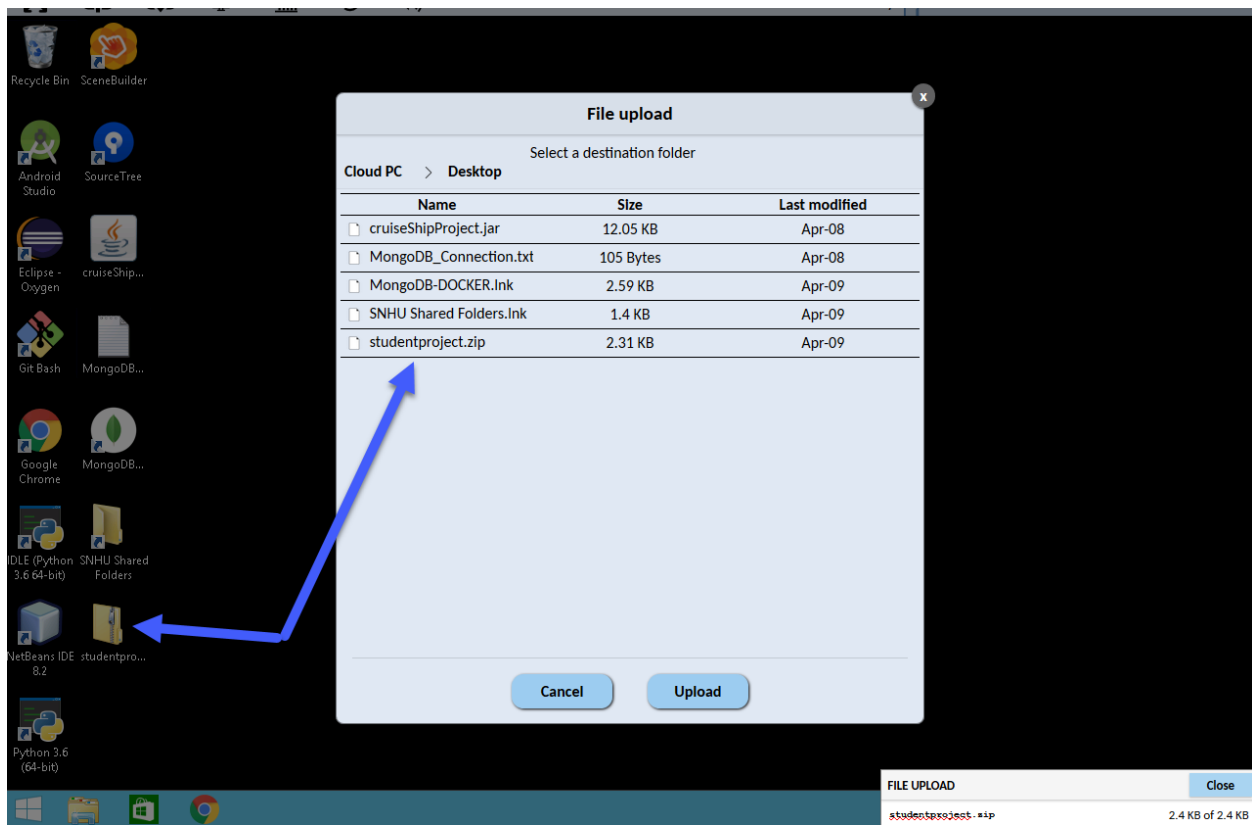




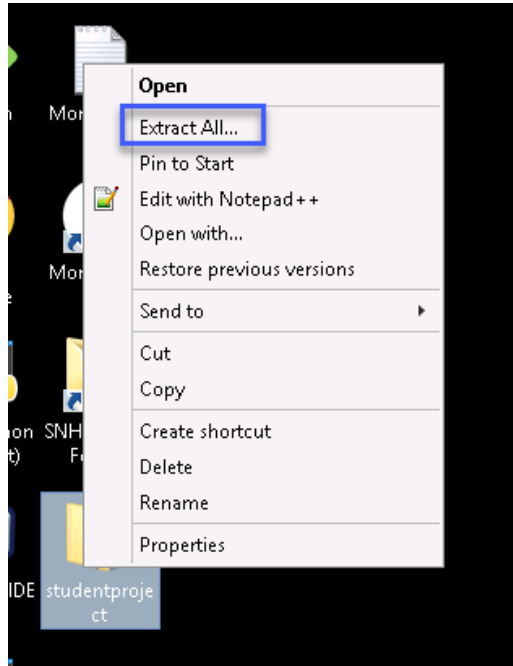
- Next, you are provided with a File Upload dialog box. Navigate to and select the file you want to upload. Then, click the **Open** button. In this example, we've selected the **studentproject.zip** file.



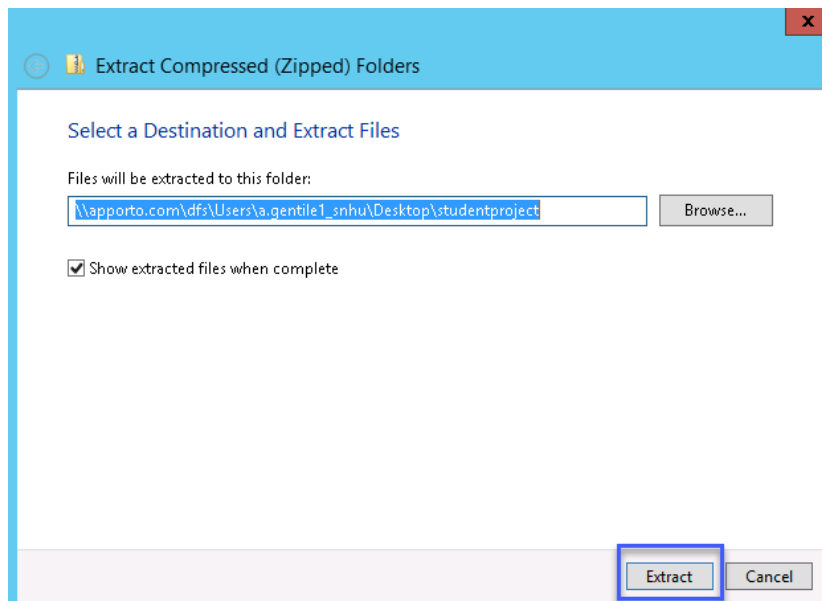
- Once the file uploads, it will be listed in the File Upload window and in the destination folder you selected. In this example, the studentproject.zip file appears in the File upload window, and the destination folder is the Apporto desktop.

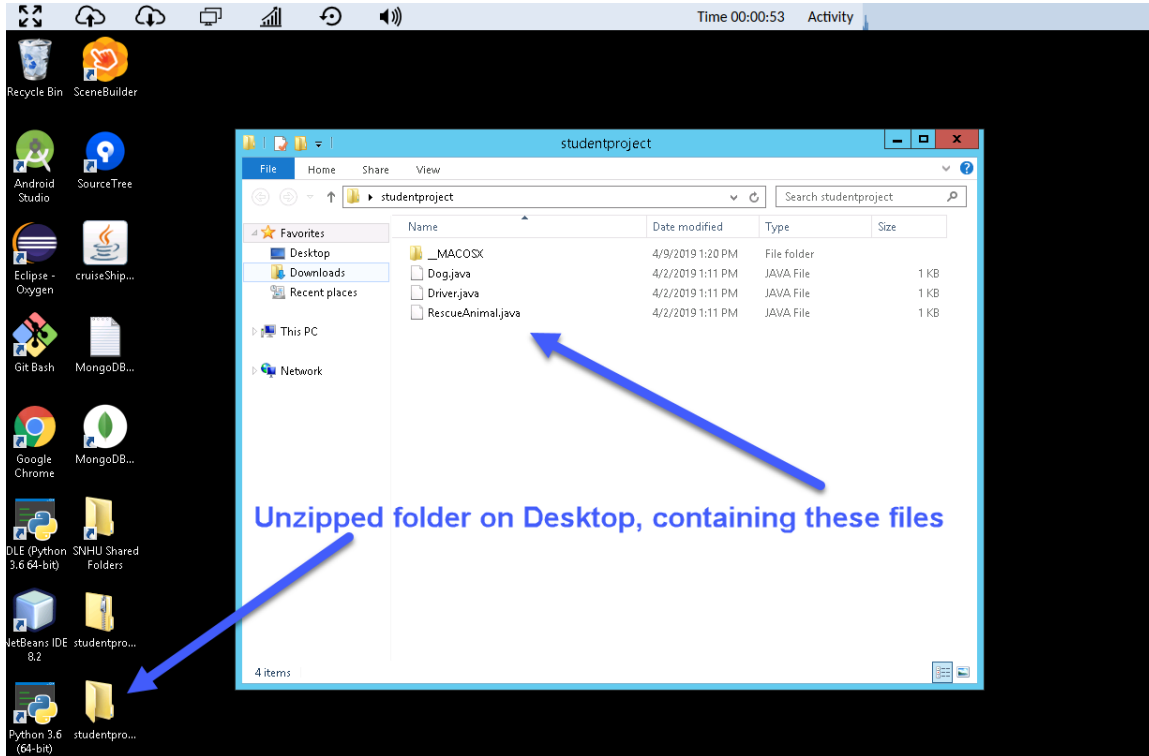


6. Close the **File upload** dialog window.
7. Locate the studentproject.zip folder. In this case, it is saved on the Apporto desktop. Right-click on the folder and select **Extract All...** to unzip the folder.



8. This will bring up a dialog box asking you to select a destination for your extracted files. In this example, the default location is the **Desktop**. Click **Extract**, which will create an unzipped folder in the destination you have selected.

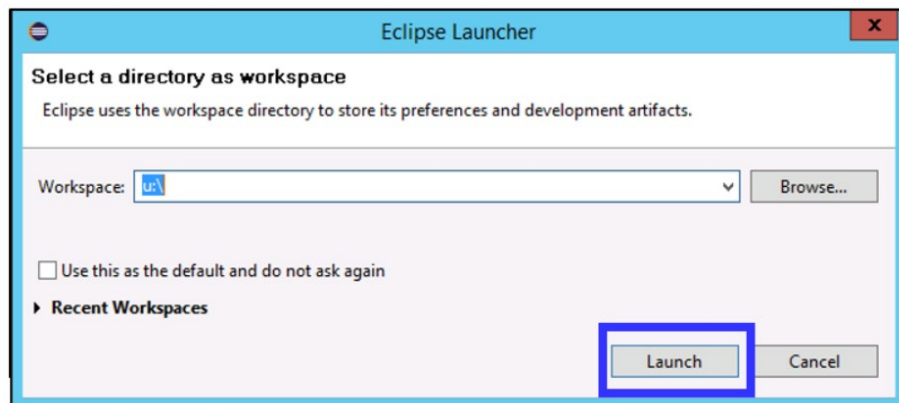




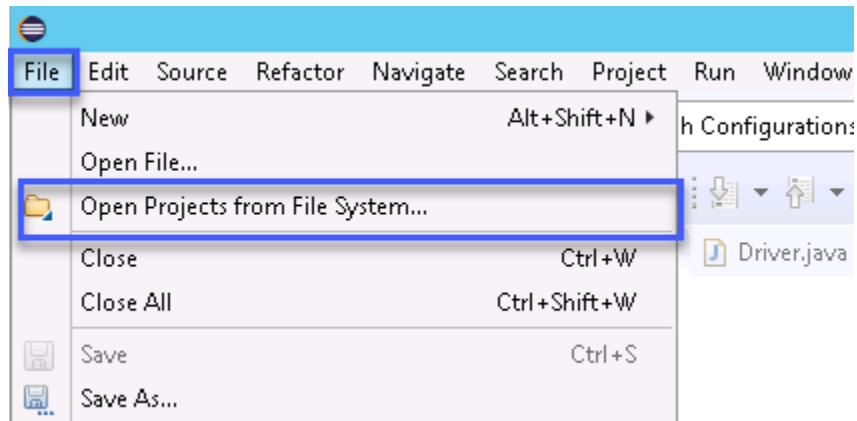
9. Next, open Eclipse by double-clicking the **Eclipse icon** located on the Desktop.



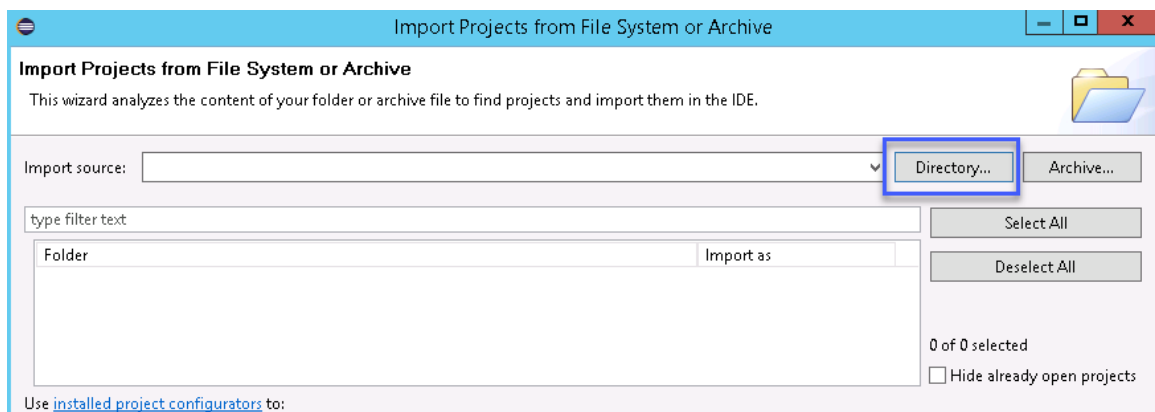
10. Select the **Launch** button in the Eclipse Launcher window to open Eclipse.



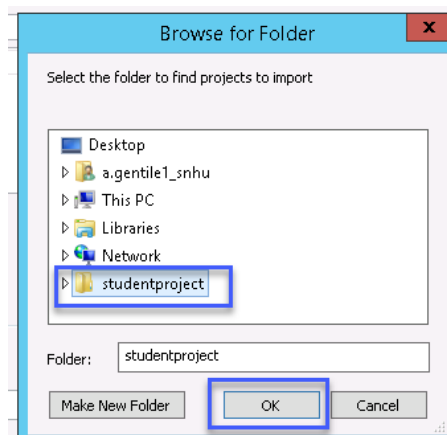
11. From the **File** menu, select **Open Projects from File System**. This will open up a dialog window.



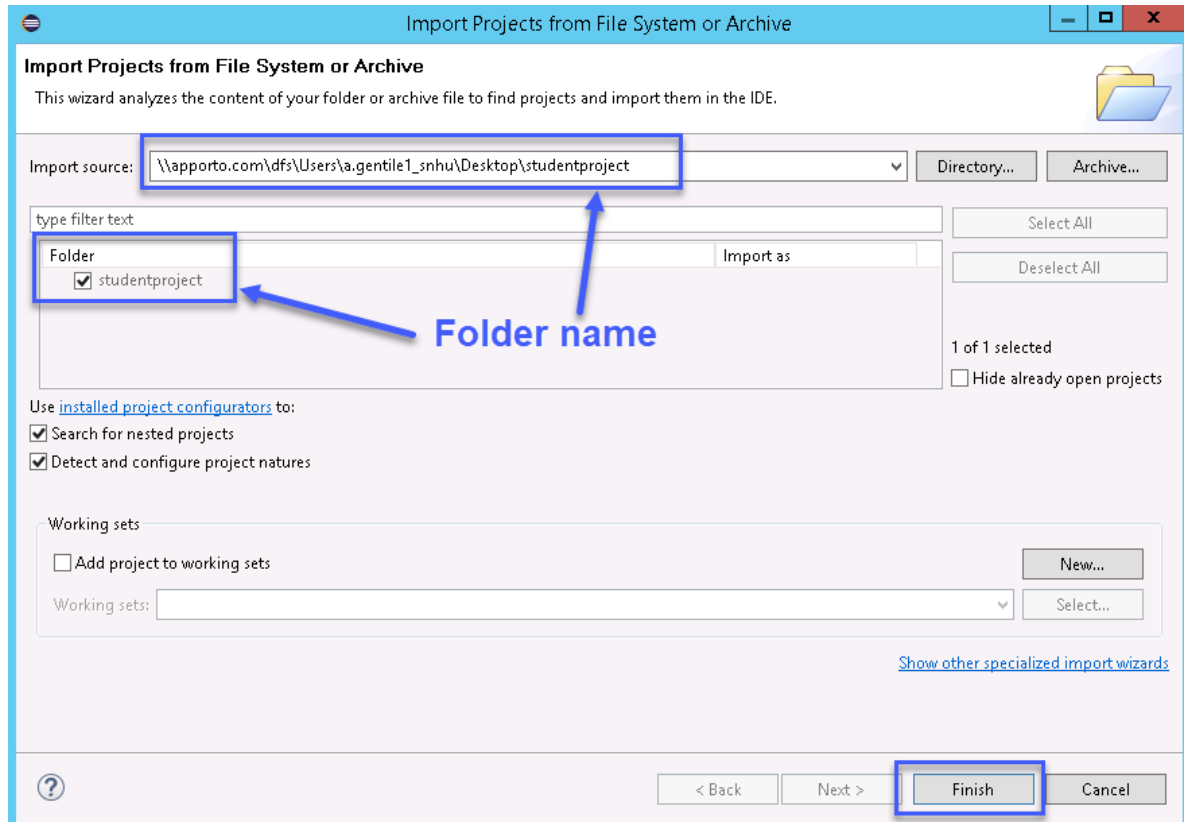
12. You will use the Import dialog window to navigate to the project you uploaded. Next to the **Import Source** text box, click the **Directory...** button to browse for your project folder.



13. In the dialog box, navigate to the destination folder where you uploaded your project. In this example, the destination folder is the Desktop. Select your project folder and click the **OK** button.



14. After selecting the file to import, you should see the folder's address in the **Import Source** textbox. Select the **Finish** button in the Import dialog window.



15. To access the project files, navigate to the **Package Explorer** workspace. You can view and open your project files in this workspace.

- a) Within the Package Explorer workspace, click on the arrow next to the project folder to view the files. In this example, the folder is called **studentproject**.
- b) To open your files in the Package Explorer workspace and begin working, double-click on each class file. Each file will have its own tab, so you can easily switch back and forth between them. Your project is now in Eclipse and ready for you to use!

