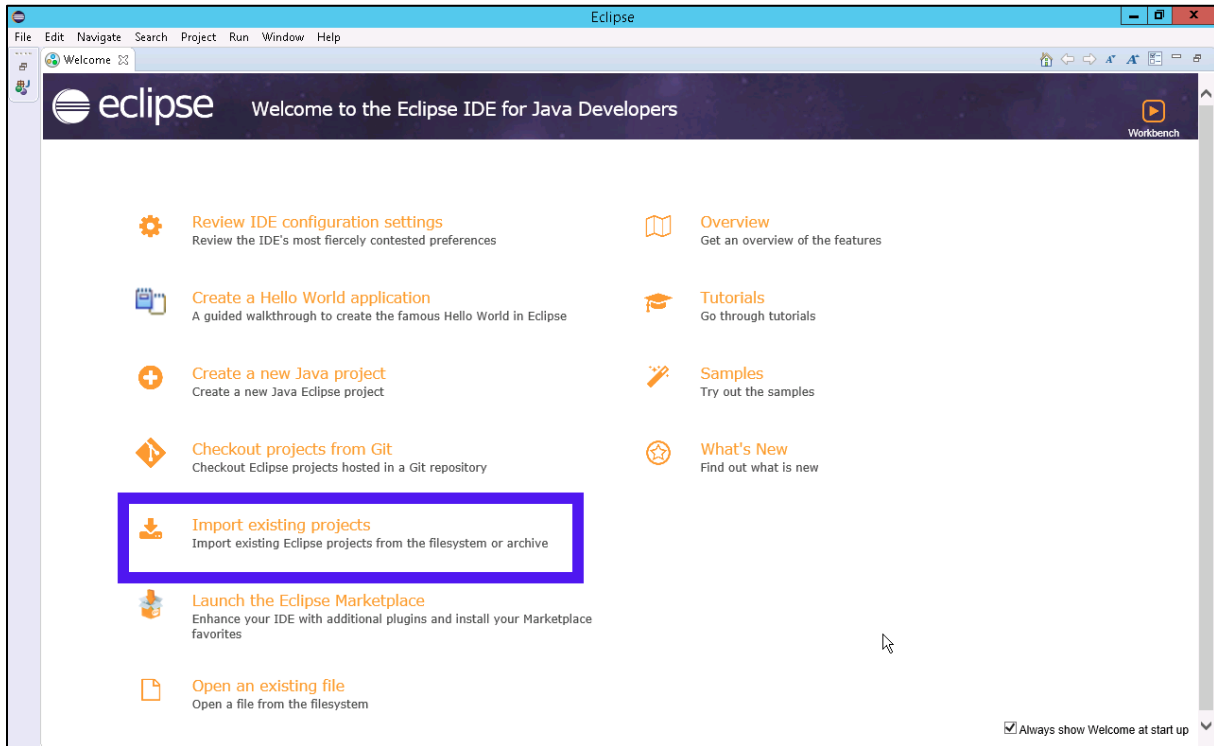
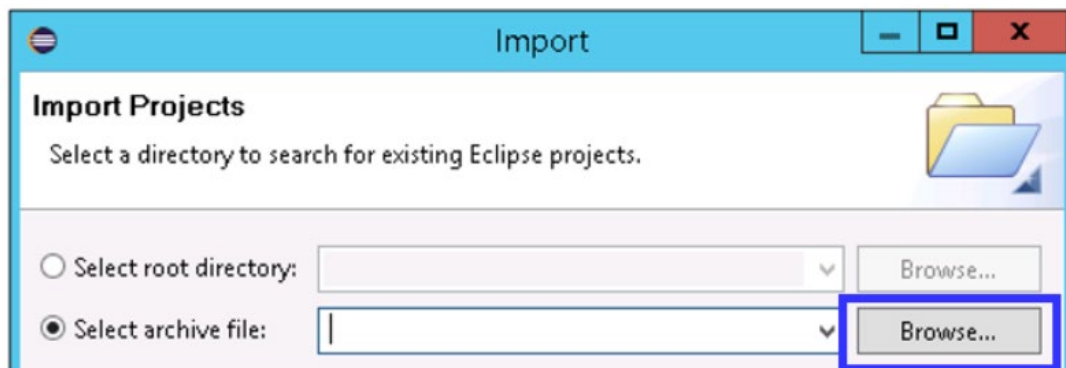


## Uploading Files to Eclipse Tutorial

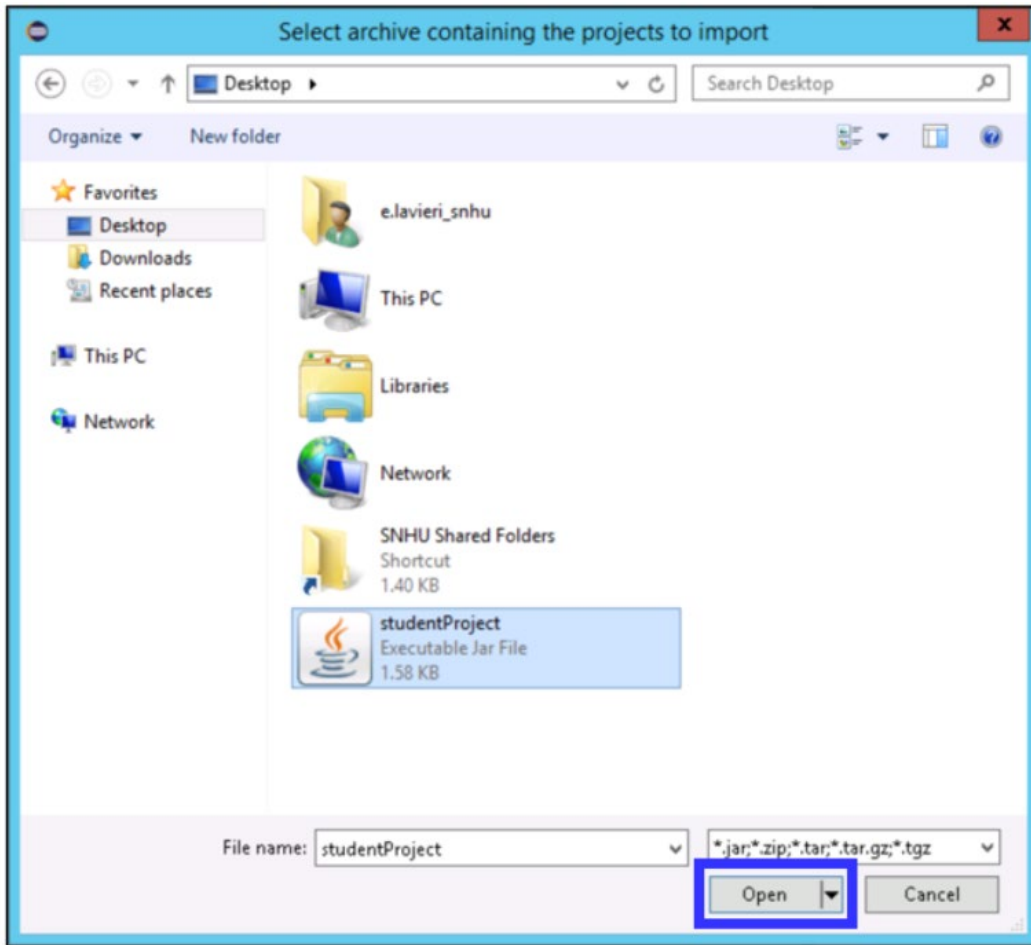
1. Select the **Import existing projects** option from the **Welcome to the Eclipse IDE for Java Developers** window. If you do not see the Welcome window, select the **Help** tab on the menu bar at the top of the screen, then click **Welcome**.



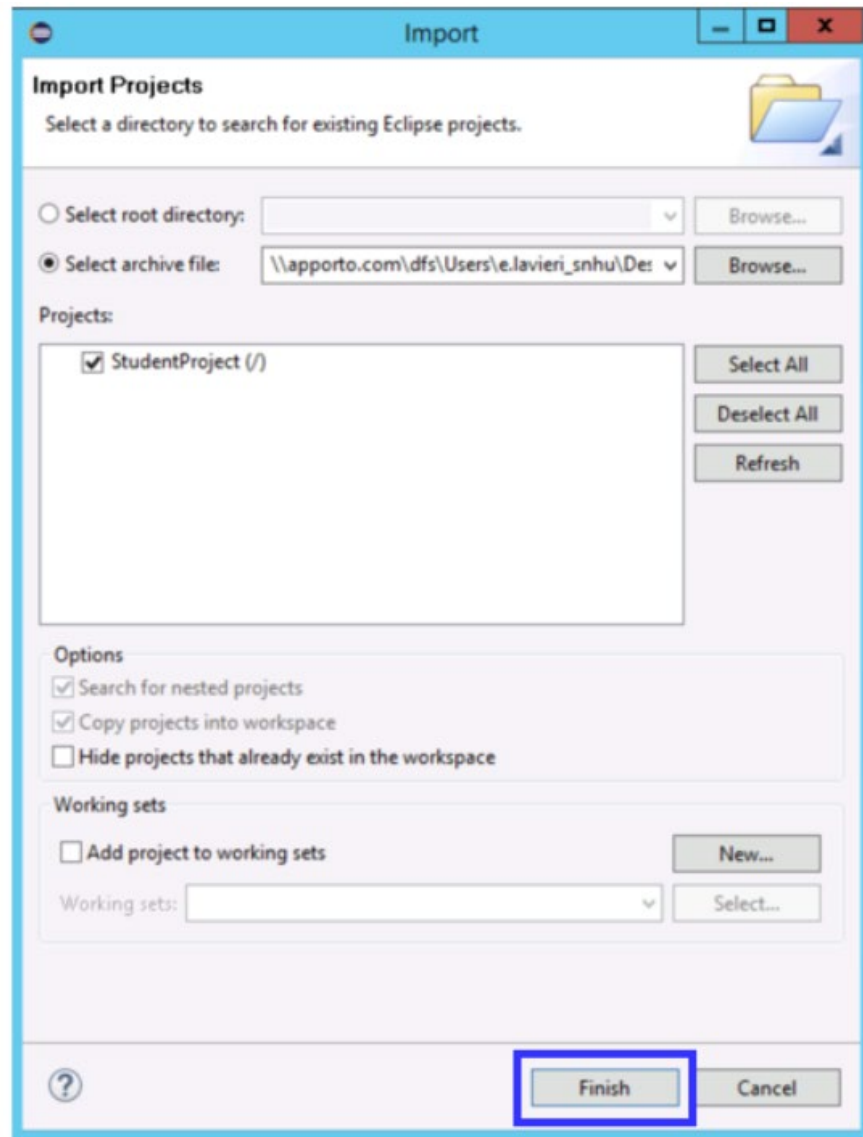
2. You will use the **Import** dialog window to navigate to the project you uploaded. Select the **Select archive file** option, and then click the **Browse** button.



3. Navigate to the destination folder where you uploaded your project. In this example, the destination folder is the Desktop. Select your uploaded project and click the **Open** button.



4. After selecting the file to import, select the **Finish** button in the **Import** dialog window.



5. To access the project files, navigate to the **Package Explorer** workspace. You can view and open your project files in this workspace.
  - a) Within the Package Explorer workspace, click on the **src** folder. Then, select the **default Package** folder. In this example, the selected folder is called **projectPackage**.
  - b) To open your files in the Package Explorer workspace and begin working, double-click on the files. Your project is now in Eclipse and ready for you to use!

